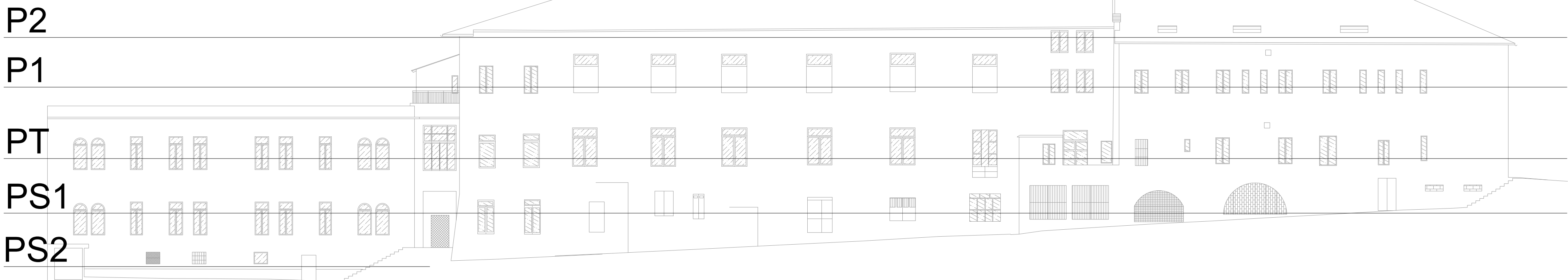




RILIEVO COMPLESSO SANT'ANGELO MAGNO

Società di Ingegneria "ASISTEMA SRL"  
Arch. Aleandro Orsini Arch Sonia Calvelli

NAVIGATORE



0.00

PIANTA PIANO SEMINTERRATO  
1:200



PIANTA PIANO SEMINTERRATO

